



# Quartaris

## Product Fact Book



**Barum** 

Good tyres. Good deal.



## Technical highlights



Safety in snow and ice



Safety on wet roads



Safety on dry roads



Product feature - Effect - Customer benefit

**Barum** 

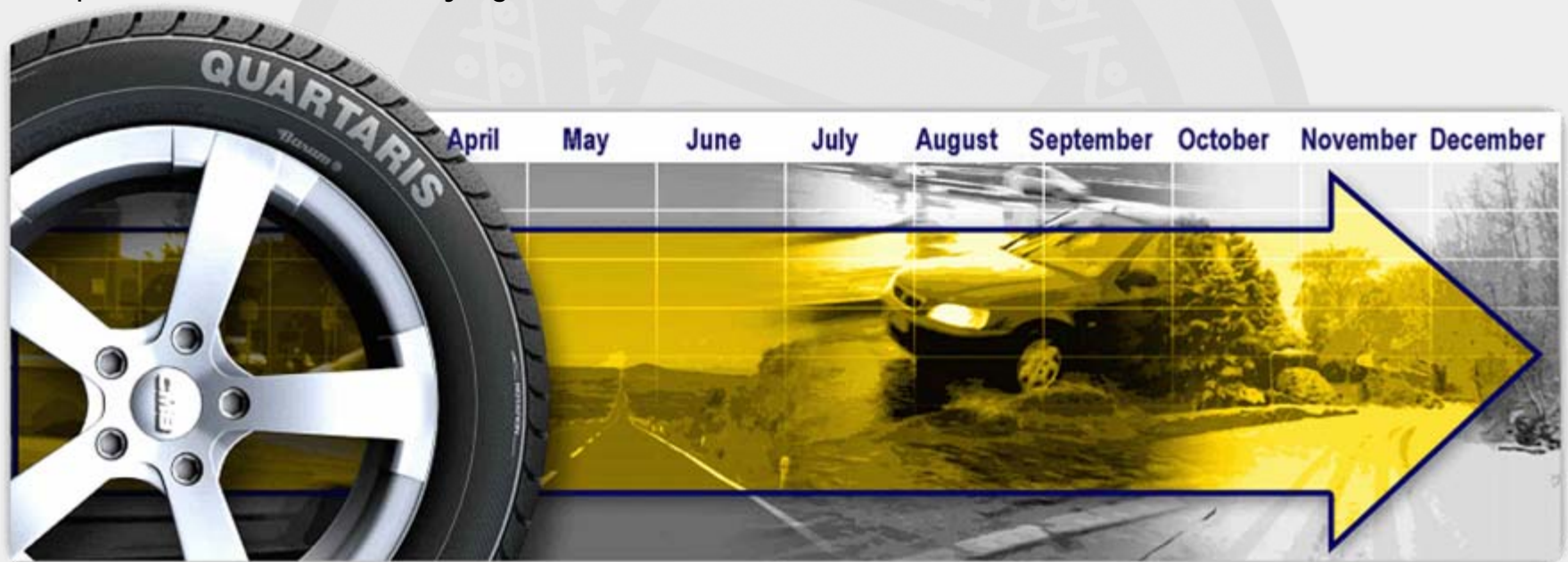
Good tyres. Good deal.



## Development objective

Developing a tyre that offers a high degree of safety, whatever the weather conditions.

For end users who do not change their tyres according to the season we provide the best possible compromise to meet the varying demands in summer and winter.



**Barum**

Good tyres. Good deal.





## Technical highlights | Snow and ice

### BASSS: Barum All Season Sipe System

- Dense trapezoidal sipes in the centre
- Recess structure combined with shoulder sipes
- ➔ provide many gripping edges and ensure good grip in snow and ice

#### Purpose of the recess structure:

The recesses work as snow pockets where the snow can collect ➔ snow-snow cohesion.

However, the tread block still remains stiff enough to ensure optimum power transmission on dry roads.



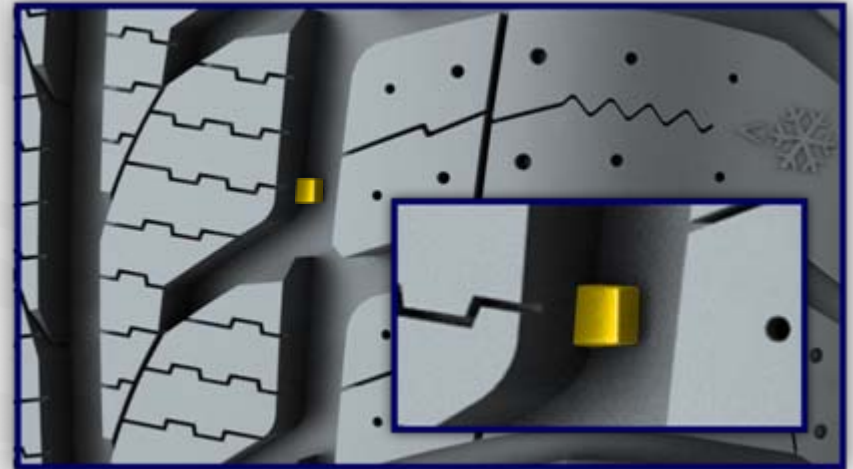
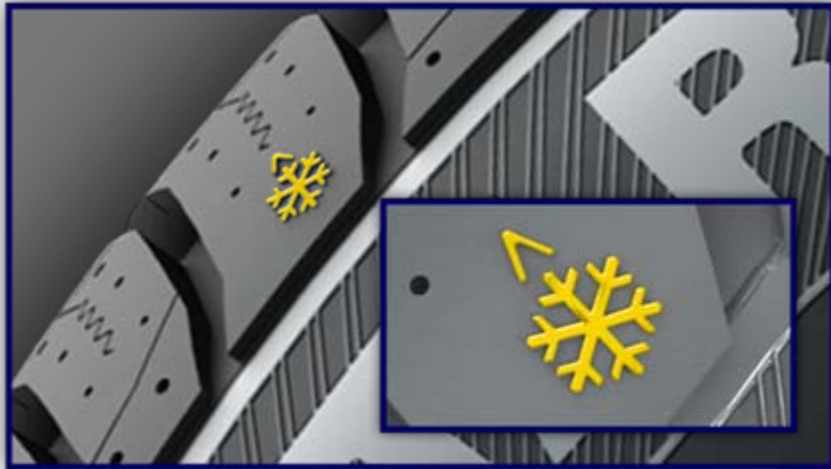
**Barum** 

Good tyres. Good deal.



## Technical highlights | Snow and ice

### Winter TWI



### New safety aspect:

When the tread depth reaches 4 mm, the TWI indicates the limit of the tyre's winter suitability.

Once the tread is worn down to 4 mm and the limit of winter suitability has been reached, the TWI is level with the tread surface, making the tyre wear clearly visible.

**Barum** 

Good tyres. Good deal.



## Technical highlights | Snow and ice

### Snowflake on the Mountain Symbol

The Quartaris carries the **Snowflake on the Mountain Symbol**.

The use of the symbol signifies that it fulfils the required **high snow traction values**.

The Snowflake on the Mountain Symbol is an **acknowledged indicator** that a tyre is "suitable for use in wintry road conditions".



**Barum**

Good tyres. Good deal.

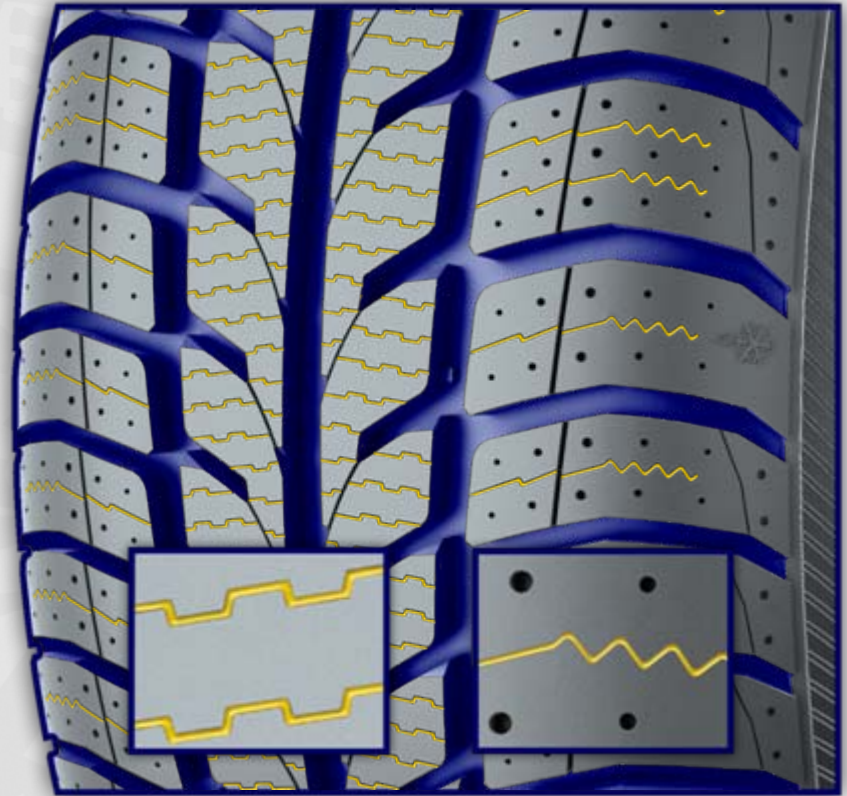




## Technical highlights | Safety on wet roads

### Directionally-orientated tread pattern with shallow sipes

- Directionally-orientated tread pattern with wide circumferential grooves and a large number of lateral channels ensures good aquaplaning characteristics.
- Shallow sipes mean optimum water dispersion, similar to the 'windscreen wiper principle', thereby ensuring short braking distances.
- Quartaris part-silica compound with high road grip also helps to achieve short braking distances on wet roads.



**Barum**

Good tyres. Good deal.



## Technical highlights | Handling on dry roads and braking

### Interlinked ribs, large, sturdy shoulder blocks

- Straight ribs in the central section of the tyre mean precise steering response and short braking distances on dry roads.
- Large shoulder blocks with reduced sipe density provide high stiffness, resulting in excellent handling characteristics on dry roads as well as short braking distances.



**Barum**

Good tyres. Good deal.





## Technical highlights | Feature - Effect - Customer benefit

Product feature	Effect	Customer benefit
BASSS - sipe system	High number of edges formed Snow-snow friction	Outstanding traction on snow and short braking distances on ice
Directionally-orientated tread pattern with wide circumferential grooves and shallow sipes	Efficient water dispersion	Good aquaplaning characteristics and short braking distances
Straight circumferential rib and sturdy shoulder blocks	Provides support for the blocks and high block stiffness	Precise steering response and short braking distances

**Barum** 

Good tyres. Good deal.



## Barum Quartaris | Market launch

Available from August 2008

165/70 R13 T

155/70 R13 T

175/70 R13 T

165/70 R14 T

175/70 R14 T

165/65 R14 T

175/65 R14 T

185/65 R14 T

185/65 R15 T

185/65 R15 H

195/65 R15 T

195/65 R15 H

185/60 R14 T

185/60 R14 H

195/60 R15 H

205/60 R15 H

205/55 R16 H

195/50 R15 H



**Barum** 

Good tyres. Good deal.



# The new Barum Quartaris



**Barum** 

Good tyres. Good deal.